

STANDARDS OF QUALITY

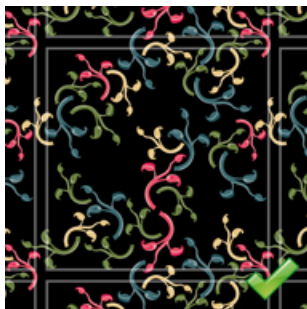
FOR DESIGN PARTNERS

Pattern Design has set up standards of quality to guarantee the specified quality and transmission liability of the designs offered on the Pattern Design online library. The following criteria is part of the contract and has to be accomplished in order to offer at Pattern Design:

Creation of the design:

- Optionally with Adobe Illustrator, Affinity Designer, CorelDRAW or other vector-based software
- Document colormode should be Standard RGB (sRGB)
- Place the original repeating tile on the artboard (artboard should equal size of repeat)
- Convert all brush- or border-effects to paths
- Delete all empty paths without filling or border
- Don't lock the layers of your SVG-file
- There should be no objects outside the artboard of your SVG-file
- Do not rasterize objects
- Do not embed or link to pixel images (limits advantages of vector-files)
- Check if the repeat has seamless and smooth borders

Correct:

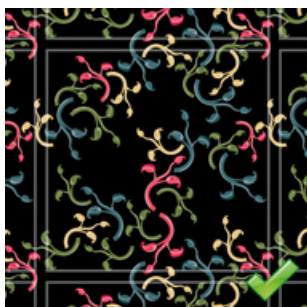


Wrong:



- Check if the repeat is not too obvious

Correct:



Wrong:



Saving the design:

- Vector file in the SVG file format with a precision of 7 decimal places
- Recommended size: Artboard and repeat with about 4000px width

Upload of the design:

Please upload your designs directly from your personal account on patterndesigns.com.

To further enhance your sales you can use the option to add descriptive texts and keywords.

Titling of the design:

Title

- Choose a title that matches the design
- The title must be unique
- The title must not contain special characters or numbers, even in full (e.g., one, two, etc.)
- The last part of the title, "Pattern Design" or "Seamless Pattern" will be automatically added.
- Every word in the title must begin with a capital letter. (e.g., The Fast Hare Jumps)

Description

- Describe your pattern with a grammatically correct sentence
- Don't use keywords

Tags

- Use tags that describe the content of your design. Too general tags distort search results on our website and provide no benefit.
- Avoid using generic terms (e.g., seamless, repeat, design, etc.)
- Avoid using color names
- Avoid using file-specific terms (e.g., vector, ai, etc.)

Categories

- Only choose categories directly related to your design.
- You can choose a maximum of 3 categories for your design.

Use of Artificial Intelligence

We generally reject all designs generated exclusively with AI, as we want to support the individuality and creativity of our design partners. However, it is possible to incorporate individual AI-generated elements into a pattern if they meet our quality standards, as well as to use AI for inspiration.

Legal Notice:

- The submitting designer must be the creator of the design.
- Logos, trademarks, or other protected elements may not be used in designs.
- Please refer to the **license agreement** for further information.

IMPORTANT: If a design does not meet the above specifications, Pattern Design will reject it, stating the possible reasons for the rejection.

In case of any questions please contact our Design Support Team: design@patterndesigns.com